



**CARING
WITHOUT LIMITS**

AVer MD330UI

Medical Grade PTZ Camera 





AVer MD330UI is specially designed and medically certified for Telemedicine with the IEC 60601-1-2 Medical Certification. The 30X optical zoom lens with 4K output resolution delivers superb image quality. AI Noise Reduction offers a face-to-face communication experience for patients and doctors. A first in the industry, the detachable camera head makes 360-degree angle close-up shooting and snapshots possible. The MD330UI is available for infrared night view, delivering care 24/7.



30X Optical Zoom



4K Output Resolution



Speedy Focus



Wide Angle PTZ



Handheld Camera Head



Short Working Distance



One-Click Pan-Tilt



One-Button Snapshot



IR for Night View



Medical Certifications

Revolutionary Detachable Head Design

The detachable camera head design is a true revolution in telemedicine – not only can the doctor make use of the motorized remote controlled PTZ functionality, the near-site medical assistant can also simply detach the camera from the base and easily give the doctor a clear view of any difficulties to capture area of interest.



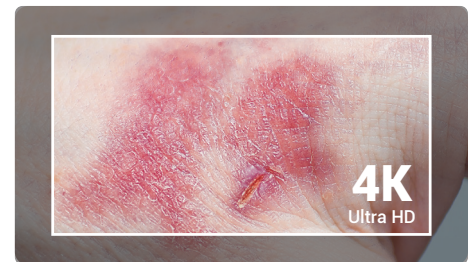
Unparalleled 30X Optical Zoom Capability

The 30X optical zoom lens picks up even the smallest of details for the doctor to precisely diagnose, thanks to a superior autofocus, zoom speed and speedy camera movements.



Outstanding 4K Resolution

The MD330UI delivers ultra-clear 4K resolution imagery of the patient to the doctor and works together with the excellent 30X optical zoom to allow doctors to make accurate remote diagnoses.



AI Acoustics

With an integrated speakerphone and microphone, the MD330UI is equipped with an all-in-one audio system. AVer's in-house AI Noise Deduction technology makes communication smooth and telemedicine sessions stress free.



Medical Grade Certification

The IEC 60601-1-2 medical certification not only ensures stability and safety of the MD330UI, but also guarantees the compatibility of other medical grade devices with the MD330UI.



Product Specifications

| Camera | | Speaker | |
|----------------------------|---|--|--|
| Image Sensor | 1/2.8" 4K Exmor CMOS | Embedded Speaker | Yes |
| Effective Picture Elements | 8 Megapixels | SPL | 77 dB SPL (1W / 1m) |
| Output Resolutions | 4K/30 (IP/UVC), 1080p/60, 1080p/59.94, 1080p/50, 1080p/30, 1080p/29.97, 1080p/25, 720p/60, 720p/59.94, 720p/50, 720p/30 | Maximum SPL | 90 dB SPL at 0.5 m |
| | | Microphone | |
| Minimum Illumination | 0.7 lux (IRE50, F1.6, 30fps) | Built-in Microphone | 2 (Omnidirectional) |
| S/N Ratio | ≥ 50 dB | AI Noise Reduction | Yes |
| Gain | Auto, Manual | Pickup Range | 5 m |
| Shutter Speed | 1/1 to 1/10,000 sec | Sensitivity | -33 dBFS |
| Exposure Control | Auto, Manual, Priority AE (Shutter, IRIS), BLC, WDR | Frequency Response | 20 Hz to 20 KHz |
| White Balance | Auto, Manual | Maximum SPL | 133 dB SPL at 0.5 m |
| Optical Zoom | 30X | Loop Recording | |
| Viewing Angles | DFOV : 75.5° (Wide) to 3.1° (Tele) HFOV : 68.0° (Wide) to 2.7° (Tele) VFOV : 41.7° (Wide) to 1.5° (Tele) | Resolution | Up to 4K |
| | | Length of Video | 5 minutes |
| | | Recording Modes | Loop & continuous |
| Focal Length | f = 4.3 mm (Wide) to 129 mm (Tele) | Loop Mechanism | Wipe the oldest clip |
| Aperture (Iris) | F = 1.6 (Wide) to 4.7 (Tele) | IP Streaming | |
| Minimum Working Distance | 0.01 m (Wide), 1.2 m (Tele) | Resolution | 4K 30fps |
| Pan / Tilt Angles | Pan : ±170°, Tilt: +90° / -35° | Network Video Compress Formats | H.264, H.265 |
| Pan / Tilt Speed (Manual) | Pan : 0.1° to 100° / sec, Tilt: 0.1° to 100° / sec | Maximum Frame Rate | 4K 30fps |
| Preset Speed | Pan : 200° / sec, Tilt: 200° / sec | Network Interface | 10 / 100 / 1000 Base-T |
| Preset Positions | 10 (IR), 256 (RS-232 / IP) | Multi-Stream Capability | 2 (RTSP / Web Page), 4K 30fps (max.) |
| Camera Control - Protocols | VISCA (RS-232 / IP), CGI (IP) | Network Protocols | IPv4, TCP, UDP, ARP, ICMP, IGMP, HTTP, DHCP, RTP / RTCP, RTSP, RTMP, VISCA over IP |
| Image Processing | Noise Reduction (2D / 3D), Flip, Mirror, WDR, BLC | USB | |
| Power Frequencies | 50 Hz, 60 Hz | Connector | USB 3.0 |
| Interface | | Video Format | MJPEG · YUY2 |
| Video Outputs | HDMI, IP, USB | Audio Format | PCM |
| Audio Outputs | HDMI, IP, USB | USB Video Class (UVC) | UVC 1.1 |
| General | | USB Audio Class (UAC) | UAC 1.0 |
| Power Requirement | AC 100 - 240V to DC 12V / 3.34A | Software Tools | |
| Power Consumption | 36W | IP Search and Configuration Tool | Support Windows® 7 or later |
| Dimensions (W x H x D) | 168 x 205 x 126 mm | Warranty | |
| Net Weight | 1.95 kg | Camera | 3 Years |
| Application | Indoor | Accessories | 1 Year |
| Tally Lamp | N / A | Package Contents | |
| Security | Kensington Slot | Camera, Remote Control, Power Adapter, Power Cord, 1/4"-20, L=7.5mm Screw (x2), USB 3.0 Type-B to A Cable (1.5m), On-Camera Lens Cable (Standard, 180 cm), Short Lens Cable (45 cm), Quick Start Guide | |
| Remote Control | Infrared | | |
| Operating Conditions | Temperature : 0 °C to +35 °C; Humidity : 20% to 80% | | |
| Storage Conditions | Temperature : -20 °C to +60 °C; Humidity : 20% to 95% | | |

* Specifications may vary depending on location and are subject to change without notice.

Product Appearance

Front



- 1. Detachable Camera Head
- 2. Speaker
- 3. Microphone Array
- 4. LED Indicator
- 5. Mode Switch Button

Back



- 1. RJ45
- 2. USB 3.0 Type-B
- 3. HDMI
- 4. USB Type-A
- 5. microSD Card Slot
- 6. RS-232
- 7. DC 12V
- 8. Kensington Slot

Detachable Camera Head



- 1. Snapshot Button



©2024 AVer Information Inc. All rights reserved.
All brand names and logos are trademarks of their respective companies.

Distributor/Dealer