

QUADRA[®]

acoustic false ceiling
patented design

Version: 1.1

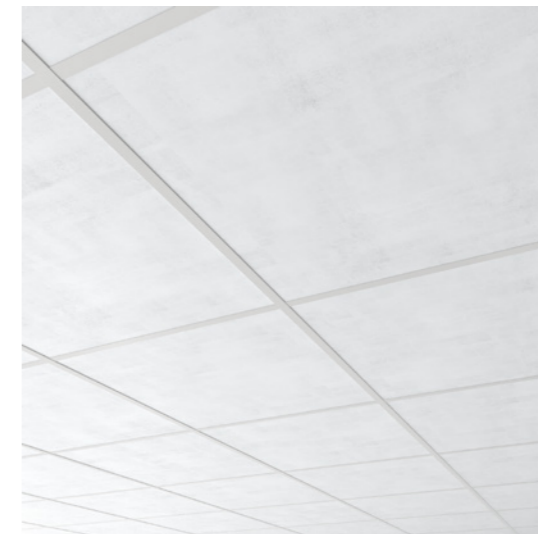
design by Arkimera

EN *Our wish was to bring innovation and a strong character in an obsolete field like the one of the classic 60x60 or 60x120 mesh ceilings: we decided to make the finishes developed for the other collections also available to this one. This is how the 60x60 panels were born: they feature a concrete and plaster effect, they can be painted with NCS colours on customer's request, they can be printed with a graphic design or coupled with our fabrics.*

IT *Il nostro desiderio era quello di portare innovazione e carattere in un settore forse un po' obsoleto come quello delle soffittature a classica maglia 60x60 o 60x120 grazie alla possibilità di estendere a questa collezione le finiture sviluppate per tutte le altre. Ecco quindi venire alla luce pannelli 60x60 ad effetto cemento, ad effetto intonaco verniciabili con NCS su indicazione del cliente, oppure stampabili secondo una grafica a disegno, o accoppiata ai nostri tessuti.*

FR *Innovation et caractère sont des qualités qui ne pouvaient pas manquer dans un secteur obsolète tel que celui du plafond classique à mailles 60x60 ou 60x120 : c'est pour cela que nous avons étendu les finitions développées pour toutes les autres collections aussi à cette-ci. Voici donc les panneaux 60x60, avec effet béton et plâtre, qui peuvent être peints avec couleurs NCS, imprimés ou couplés avec nos tissus.*

DE *Innovation und ein starker Charakter sind Merkmale, die wir in einem veralteten Bereich wie dem der klassischen 60x60- oder 60x120-Metallgewebendecken unbedingt einbringen sollten: Wir haben uns entschlossen, die für die anderen Kollektionen entwickelten Oberflächen auch für diese verfügbar zu machen. So wurden die 60x60-Platten geboren: Sie haben einen Beton- und Putzeffekt, sie können auf Kundenwunsch mit NCS-Farben gestrichen werden und sie können mit einem Grafikdesign bedruckt oder mit unseren Stoffen kombiniert werden.*





QUADRA®
size 60x60
Materica™ finish

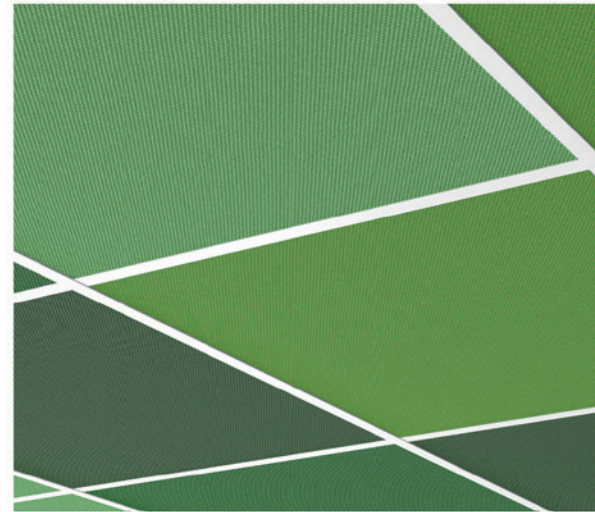


QUADRA®
size 60x120 fabric ECO finish

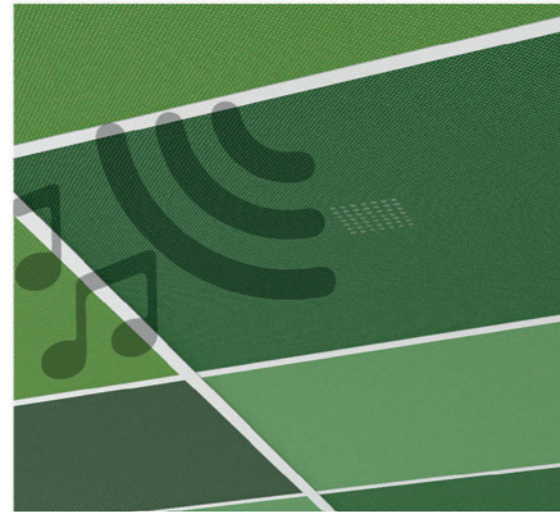


QUADRA®
size 60x60 WHITE finish

FINISHINGS



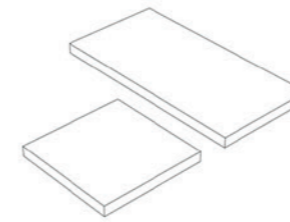
fabric ECO finish



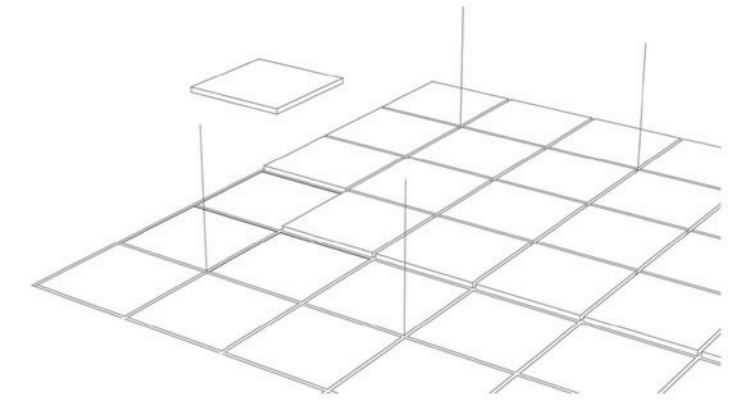
option with speaker



SIZES depth 4 cm



59,5 x 59,5 cm
59,5 x 119,5 cm
62,5 x 62,5 cm



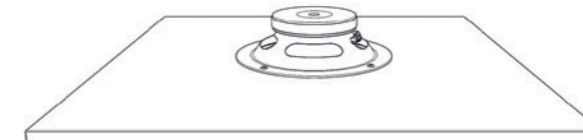
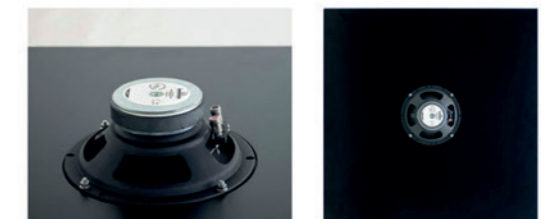
inserted into false ceiling

QUADRA® WITH SPEAKER (optional)

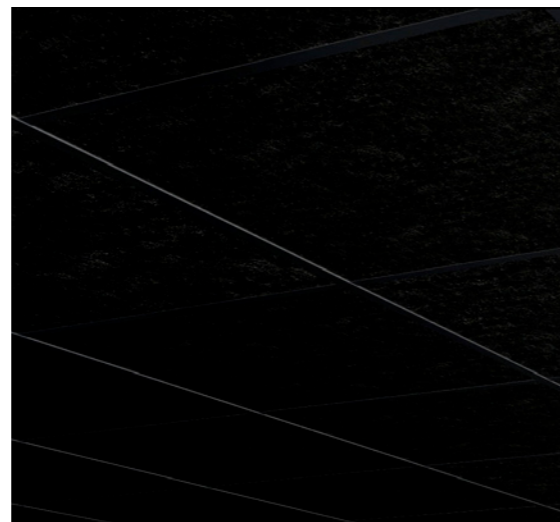
Speaker Datasheet

Type 2 way coax
Power RMS/Max (W)
50/100
Loudspeaker Ø (cm)
13,0

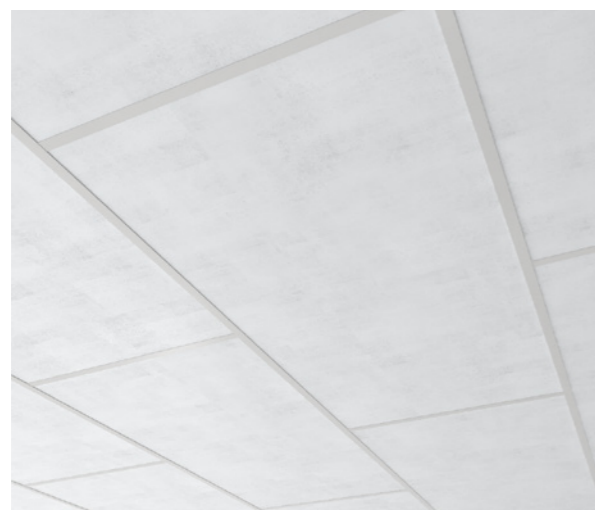
Dimensions (cm)
59,5 x 59,5 x 7,9
59,5 x 119,5 x 7,9
62,5 x 62,5 x 7,9
Impedance (Ω) 8



WHITE finish



BLACK finish

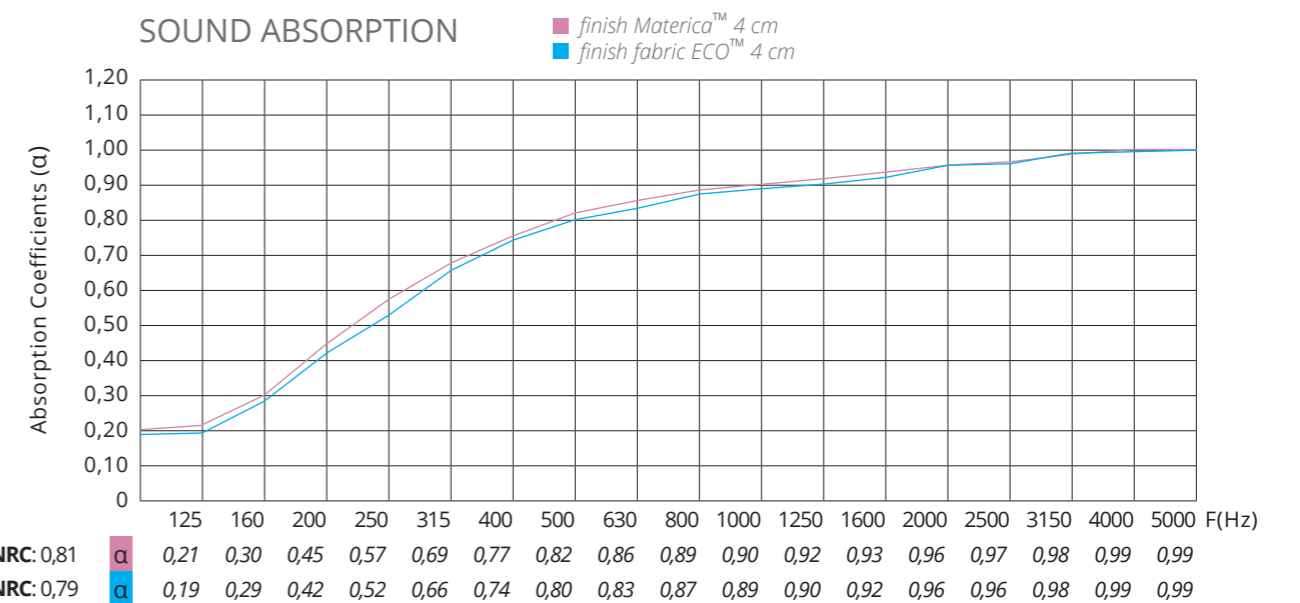


Materica™ finish



option with speaker

SOUND ABSORPTION



Materica™

patented design

wall / cement-like finish
finitura effetto muro / cemento

Microbaffle® /Parquet® /Surface®
Area™ collection

EN A finish that we developed and tested in our reverberation room, which gives our surfaces a more substantial appearance similar to concrete or wall, while maintaining the sound-absorbing properties of the support material. The effect is achieved thanks to the components used and the special handcraft that makes each surface unique and different from the others.

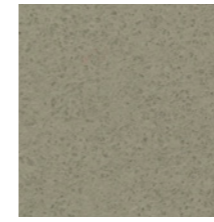
IT Finitura da noi sviluppata e testata nella nostra camera riverberante che conferisce alle nostre superfici un aspetto materico simile al cemento o muro, mantenendo le proprietà fonoassorbenti del materiale di supporto. L'effetto è realizzato grazie ai componenti utilizzati e alla speciale lavorazione manuale che rende ogni superficie diversa dall'altra.

FR Une finition que nous avons développée et testée dans notre chambre de réverbération, qui donne à nos surfaces un aspect semblable au béton ou mur, tout en conservant les propriétés d'absorption acoustique du matériau de support. L'effet est obtenu grâce aux composants utilisés et au traitement manuel spécial qui rend chaque surface unique et différente.

DE Eine Verzierung, die wir in unserem Nachhallraum entwickelt und getestet haben und die unseren Oberflächen ein stärker betonähnliches oder Wand Aussehen verleiht und gleichzeitig die schallabsorbierenden Eigenschaften des Trägermaterials beibehält. Der Effekt wird dank der verwendeten Komponenten und der speziellen Handarbeit erzielt, die jede Oberfläche einzigartig macht.

Materica WALL™

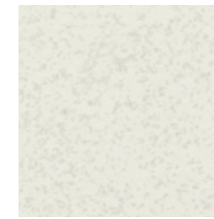
Gray Shades
on White fiber



MC31



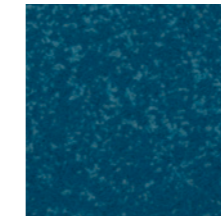
MC32



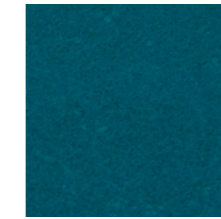
MC33

Materica WALL™

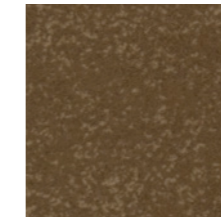
Colour Shades
on White fiber



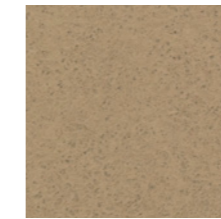
MC51



MC52



MC53



MC54



MC55



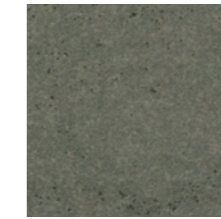
MC56

Materica CEMENT™

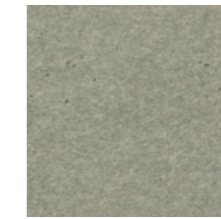
Gray Shades
on Black fiber



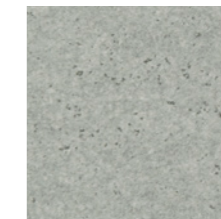
MC11



MC12



MC13



MC14

Custom colours



MC
on white fiber or
black fiber

EN In addition to the colours available, it is possible to request custom colours. The colours shown are purely indicative.

IT Oltre alle colorazioni disponibili è possibile produrre colorazioni su richiesta. I colori riportati sono indicativi.

FR En plus des couleurs disponibles, il est possible de demander des couleurs personnalisés. Les couleurs présentées sont indicatives.

DE Zusätzlich zu den verfügbaren Farben ist es möglich, auf Anfrage Farben herzustellen. Die angeführten Farben gelten lediglich als Beispiel.

ECO *fabric / tessuto*

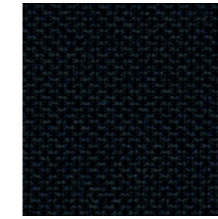
Microbaffle® /Parquet® /Surface®
Area™ /Atelier® /Cinematelier®
collection

EN An environmentally friendly knit fabric made from 100% yarn resulting from the reuse of plastic bottles. Eco is naturally unravelable, it is a compact technical fabric with a slightly three-dimensional appearance typical of jersey.

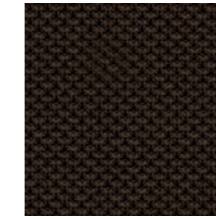
IT Tessuto a maglia environmentalmente-friendly realizzato con il 100% da filato derivante dal riuso di bottiglie in plastica. Eco risulta indemagliabile per sua natura, si presenta come tessuto tecnico e compatto con aspetto leggermente tridimensionale tipico del jersey.

FR Tricot écologique, complètement fabriqué à partir de fil issu de la réutilisation de bouteilles en plastique. Eco est indémaillable, un tissu technique compact avec un aspect légèrement tridimensionnelle typique du jersey.

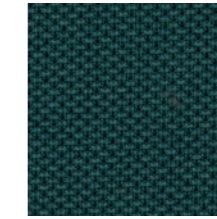
DE Umweltfreundliche Knitgewebe, Garn 100% aus der Wiederverwendung von Kunststoffflaschen. Eco ist maschenfest, ein kompakter technischer Stoff mit einem dreidimensionalen Stil, der typisch für Jersey ist.



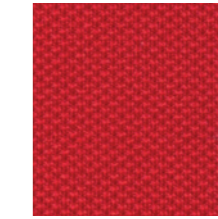
TE01



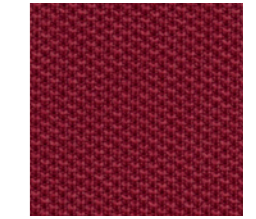
TE27



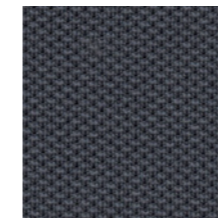
TE15



TE39



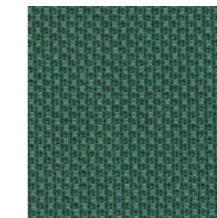
TE35



TE02



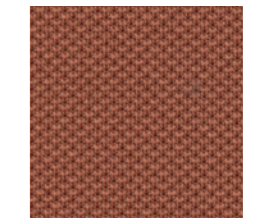
TE24



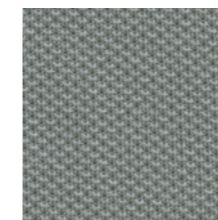
TE11



TE32



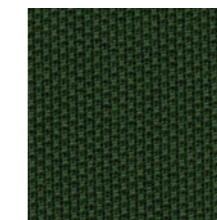
TE34



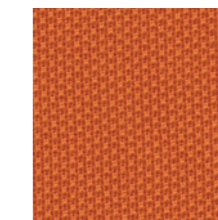
TE04



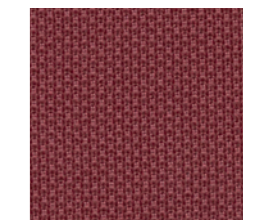
TE23



TE08



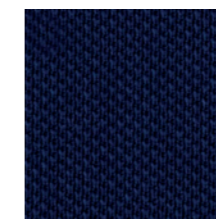
TE31



TE36



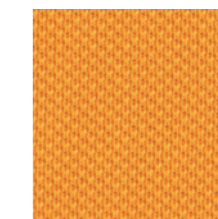
TE06



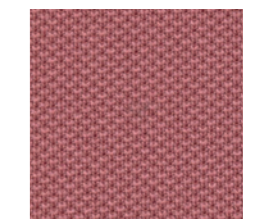
TE21



TE10



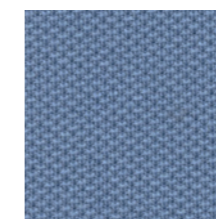
TE29



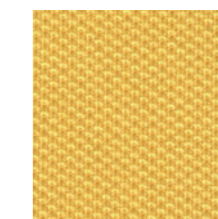
TE37



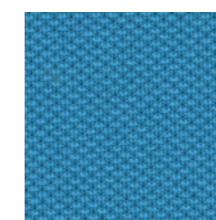
TE07



TE19



TE28



TE17

COMPOSITION: 100% Recycled Polyester
ABRASION RESISTANCE: UNI ISO 12947/2 100.000
FLAMMABILITY: EN1021/1-2 CRIB 5 BS 7176
Medium Hazard California TB117 UNI 9175 Class 1IM
OEKO-TEX STANDARD 100

EN The colours shown are purely indicative.

IT I colori riportati sono indicativi.

FR Les couleurs présentées sont indicatives.

DE Die angeführten Farben gelten lediglich als Beispiel.

Project ARKIMERA

Art Direction ARKIMERA

Translation Studioin3.com

Garvan Acoustic S.R.L. owns the Garvan Acoustic Wellness brand and all the models in this catalogue. Garvan Acoustic S.R.L. reserves the right to make technical and dimensional changes and to introduce improvements that could change the aesthetics of the products in this catalogue. The printed colour references are not binding.

Garvan Acoustic S.R.L. è proprietaria del marchio Garvan Acoustic Wellness e di tutti i modelli presenti all' interno del catalogo. Garvan Acoustic S.R.L. si riserva il diritto di apportare modifiche tecniche, dimensionali e di introdurre miglioramenti che potrebbero cambiare l'estetica dei prodotti presentati in catalogo. I riferimenti colore stampati non sono vincolanti.

Garvan Acoustic S.R.L. est propriétaire de la marque Garvan Acoustic Wellness et de tous les modèles présentés dans ce catalogue. Garvan Acoustic S.R.L. se réserve le droit de procéder à des modifications techniques et dimensionnelles et d'introduire des améliorations susceptibles de modifier l'esthétique des produits présentés dans ce catalogue. Les références de couleurs imprimées ne sont pas contractuelles.

Garvan Acoustic S.R.L. besitzt die Marke Garvan Acoustic Wellness und alle im Katalog vorgestellten Produkte. Garvan Acoustic S.R.L. behält sich das Recht vor, technische und maßliche Änderungen sowie Verbesserungen vorzunehmen, die die Ästhetik der im Katalog vorgestellten Produkte verändern könnten. Die aufgedruckten Farbangaben sind unverbindlich.



Via Vittori, 21/1-2
48018 Faenza (Ra) Italy
Tel. +39 (0546) 682097
garvan@garvanacoustic.com
OFFICIAL 3+1+1 YEAR WARRANTY

Follow us on:



www.garvanacoustic.com