



T2x Universal Controller

Defining engineering excellence - the remarkable T2x is the fifth generation of RTI's renowned T2 remote control platform. A full complement of hard buttons provide quick, intuitive control, while the 2.8" touchscreen interface can be custom tailored for full control of devices throughout the environment. Now, RTI is taking this design platform to unprecedented levels with cutting edge features that leverage today's technology, providing a more satisfying and reliable control experience than ever before. Innovations include grip sensors to keep the remote awake during use, an accelerometer for instant-on control, an edge to edge touchscreen allows improved gesture control, WiFi® and more. The combination of the T2x and an RTI control system provides the power, the customization, and the advanced features needed to make controlling today's electronics a true pleasure.

Key Features

- Dual RF transmission capability uses 433MHz and 2.4GHz (utilizing Zigbee® technology).
- Integrated 802.11b/g wireless Ethernet.
- Two-way control using 2.4GHz (Zigbee®) and RTI control components.
- Flush mount, edge-to-edge touchscreen for improved gesture support.
- Integrated grip sensors keep the remote awake while in use.
- Accelerometer provides "instant-on" control.
- Transmits IR and RF (or both - on a single button press!).
- Extremely wide IR transmitting frequency range.
- Greatly improved power management and battery charging.
- Can be remotely updated wirelessly from offsite (future support).
- Thinner, sleeker and more ergonomic.
- Forty-seven assignable/programmable keypad buttons.
- Cursor button allows simple scrolling list navigation.
- System includes a Lithium-Ion battery and docking station.
- Completely customizable and programmable.
- Non-volatile Flash memory stores your system configuration even when power is not present.



Call 952-253-3100

www.rticorp.com



It's Under Control®

Specifications

Power.....	3.6 VDC, 1800 mAh Lithium-Ion Battery Pack
Power Management.....	Automatic On/Off (integrated accelerometer/grip sensors)
Infrared Control Range.....	30 feet (9.1 meters) @ 60 degrees
Infrared Frequency Transmission Range.....	15kHz - 460kHz
Radio Frequency Control Range.....	Up to 100 feet (30.5 meters)
.....	(with optional System Interfaces/Processors)
Radio Frequency Carrier.....	802.15.4 @ 2.4GHz (Zigbee® Wireless Mesh Networking)
.....	433MHz
Wireless Ethernet.....	802.11b/g @ 2.4Ghz
Operating Temperature.....	+32°F to +122°F (0°C to +50°C)
Operating Humidity.....	5% to 95% Non-condensing
Touchscreen Display.....	High-brightness color TFT LCD
.....	1/4 VGA (240x320 pixels) with 64K colors
.....	Integrated high-resolution touchscreen
Display Size.....	2.8 in (71mm) diagonal
Backlights.....	Blue/White LED (Keypad)
Nominal Run Time on Full Charge.....	4-6 hours, continuous use
.....	(WiFi® & backlight setting dependent)
.....	(5 to 7 days on average use)
Standby Time on Full Charge.....	30 Days
Battery Charge Time.....	3-4 Hours
Total System Memory.....	128M Bytes Flash (non-volatile) memory
Device Capability.....	Total number of devices is limited only by memory
Macro Capability.....	Unlimited steps in a single macro
.....	Total number of macros is limited only by memory
.....	Macro capability on every button
Communications.....	USB 2.0 programming port
Dimensions (L x W x D).....	10.0" (254mm) x 2.3" (58mm) x 0.7" (20mm)
Enclosure.....	High-impact molded ABS plastic
Weight.....	8.8 oz. (250g) with battery pack
Warranty.....	One Year (Parts & Labor) / 90 days on the battery

All specifications subject to change without notice

* Two-way feedback available only when used with RTI control components.



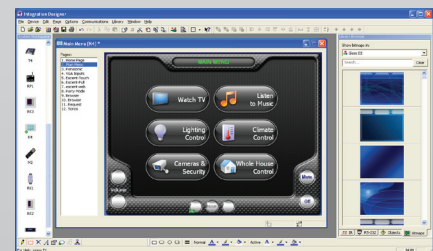
Accessories

RP-1	Remote Control Processor
XP-3	Advanced Control Processor
XP-6	Advanced Control Processor
XP-8s	Advanced Control Processor
RM-433	433MHz RF Antenna
ZM-24	2.4GHz RF Transceiver Module
ECB-5	IR Emitter Connecting Block
vIRsa Mouse	IR Emitter
ESC-2	Ethernet Serial Converter
PCM-4	Port Expansion Module
RCM-4	Relay Module



Other RTI Products

Virtual Panel	PC Control Application
RTiPanel	Mobile Device Control Application
SURFiR	Companion Remote for RTiPanel
T1-B+	Universal System Controller
T2-Cs+	Universal System Controller
T3-V+	Universal System Controller
U2	Weather Resistant Controller
RKM-1+	In-Wall Multi-Room Audio Keypad
RK1	In-Wall Keypad Controller
KX2	In-Wall Touchscreen Controller
RK3V	In-Wall Touchscreen Controller
KX7	In-Wall Touchscreen Controller
RK10	In-Wall Touchscreen Controller
RP-1	Remote Control Processor
XP-3	Remote Control Processor
XP-6	Remote Control Processor
XP-8s	Remote Control Processor
AD-4x	Distributed Audio System
AD-8x	Distributed Audio System



Integration Designer® Programming Software

5775 12th Avenue East, Suite 180, Shakopee, MN 55379
PH: (952) 253-3100 • Website: www.rticorp.com

RTI
It's Under Control®