

RK1-2

RK1-4

RK1-8

Key Features

- Use any standard Decora® type faceplate.
- Fits in single gang outlet box.
- Two, four or eight assignable/programmable button models available.
- User-definable backlight color.
- Open architecture allows control of virtually anything.
- Non-volatile Flash memory stores your system configuration even when power is not present.
- IR output port drives up to 1000 feet of wire
- Optional modules and control processors for voltage and video sensing (to monitor power status of equipment) and RS-232 control.
- USB Programming.

RK1 In-Wall Controller

The RK1 is a customizable keypad designed for flush-mount installations in walls or cabinets. It provides a self-contained control system for controlling audio/video components, lights, or other electronic systems in the home. Sized for a single gang electrical box, the RK1 incorporates two, four or eight fully-programmable buttons which can be custom labeled with text and symbols. In addition to custom labels, the backlight for each button can be configured to display almost any desired color.

Description

Designed to match any décor, the RK1 is designed to have a clean, neutral style. Three cover plate colors, compatibility with Decora® style wall plates and sized to fit in a single gang outlet box ensures seamless integration into most homes and buildings. Available with two, four or eight fully programmable buttons, the RK1 can be used as a standalone device or as part of an expandable control system.

The RK1 can directly control almost any audio/video component or lighting system up to 1000 feet away using its infrared output port. When used with the available RTI accessory devices, the RK1 is capable of infrared routing, relay control, power sensing and RS-232 communications for advanced control.

Call 952-253-3100

www.rticorp.com



It's Under Control®

Specifications

Power.....	+9VDC to +16VDC, 350mA max
Backlights.....	RGB LED - User-definable color
Infrared Output Port.....	200mA output
.....	Drives up to 1000 ft (300 m) of wire
Operating Temperature.....	+32°F to +122°F (0°C to +50°C)
Operating Humidity.....	5% to 95% Non-condensing
Total System Memory.....	64K Bytes Flash (non-volatile) memory
Device Capability.....	Total number of devices is limited only by memory
Macro Capability.....	Unlimited steps in a single macro
.....	Total number of macros is limited only by memory
.....	Macro capability on every button
Communications.....	USB programming port
Enclosure.....	Formed Steel, black powder coat
Front Plate.....	High-impact molded ABS plastic - White, metallic gray or black
Mounting.....	Mounts into single gang box
Front Plate Dimensions (H x W).....	Purchased (Decora® Type)
Dimensions (H x W x D).....	4.1 in (104mm) x 1.8 in (46mm) x 1.7 in (43mm)
Installation Cut-Out (H x W).....	2.8 in (71mm) x 1.8in (46mm)
Total Depth in Wall.....	1.37 in (34mm) Plus Cables
Weight.....	4 oz (284 g)
Warranty.....	One Year (Parts & Labor)

Decora® is a registered trademark of Leviton Manufacturing Co. Inc.

All specifications subject to change without notice



Shown with standard Decora® style faceplates

Cover Plate Colors

White	
Metallic Silver	
Black	

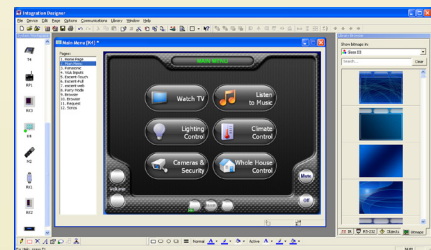
Accessories

PS16-1	Power Supply
CB-8	Touchpanel Connecting Block
ZRP-5	Remote Control Processor
ZRP-6	Remote Control Processor
MRP-64	Multi-Room Control Processor
XP-8	Advanced Control Processor
CPB-1	Control Port Connecting Block
RCM-12	Relay Control Module
ECB-5	IR Emitter Connecting Block
vIRsa Mouse	IR Emitter



Other RTI Products

T1-B	Universal System Controller
M2	Universal System Controller
T2-B	Universal System Controller
T2-Cs	Universal System Controller
T2-C	Universal System Controller
T3-V	Universal System Controller
T4	Universal System Controller
U1	Weather Resistant Controller
U2	Weather Resistant Controller
RKM-1	In-Wall Multi-Room Audio Keypad
RK2	In-Wall Keypad Controller
RK3-V	In-Wall Touchscreen Controller
K4	In-Wall Touchscreen Controller
IR-PRO	Infrared Capture System



Integration Designer® Programming Software